

SIDLESHAM SPREAD NO 129 SEPTEMBER 2024

INDEPENDENT - SELF SUPPORTING - DELIVERED OR ON-LINE FREE TO EVERY HOME IN SIDLESHAM

Editors - Please send copy to all

Wendy & Paul Devonshire 641457 dancingdevonshire@hotmail.com Dorothy Roberts dorothyroberts50@gmail.com

Lizzie Baily lizzie@lizziebaily.com Proofreading and Artwork Deliveries Organiser Sandie Walker 641249

ADVERTISE with us for £30 a year: email your advert to dancingdevonshire@hotmail.com

Printed by University of Chichester Print and Imaging Service

A Life in the POLICE

7.30pm, Friday 20th Sept.
Sidlesham Memorial Hall

with

Brian Pointer

Retired Uniform Police Inspector
West Sussex Police

There will be a retiring collection for both Police
Care UK and the SCA.

There will be bar facilities.



FREE Police Event

Learn how to stay Safe from
**Online Scams and Cyber
Crime** in this engaging and
award-winning presentation
from **Surrey and Sussex
Police Cyber Protect
Officer Daniel Sykes.**

**Venue : 26th September
2024 @ 7 pm @ Sidlesham
Memorial Recreational**

Big Pyramid Swing Band Sunday 6th October 7 pm

*Sidlesham Memorial Hall Shotford PO207RD.
Bar will be open. Bring own snacks if required.*

£10 per ticket.

Please contact Wendy Devonshire on 641457.

Mobile 07775708952

dancingdevonshire@hotmail.com



DISCLAIMER

The views expressed in the Sidlesham Spread are not necessarily those of the editorial team. The Editor reserves the right to edit and rearrange articles, but will endeavour to do so only where space is limited or where the information will be enhanced.

All information is published in good faith but we take no responsibility for errors or omissions. We are happy to publish letters as 'name and address supplied' but will not include anything sent anonymously that is clearly defamatory or hurtful to a named individual.

The Editorial Team

Copy should be sent by 23rd of the month to allow for printing for the first week of the following month.

**IF ANY VILLAGE GROUP IS NOT INCLUDED AND WOULD LIKE TO BE,
PLEASE CONTACT THE EDITORIAL TEAM**

<p>Brent Lodge Bird & Wildlife Trust Hospital - Cow Lane, Sidlesham. 01243 641672</p> <p>Church Hall Bookings Vivien Baron 641583</p> <p>Infinity Football Club Jody Hoare 07944755050 Jody_soton@yahoo.co.um</p> <p>Manhood Wildlife & Heritage Group Jane Reeve jane@jssj.co.uk 01243 641 527</p> <p>RSPB Pagham Harbour, Nature Reserve Manager Adam Taylor Pagham.harbour@rspb.org.uk 01243 641508</p> <p>Sidlesham Parish Council <i>Clerk to the Council –</i> Alison Colban parishclerk@sidlesham.org www.sidlesham.org</p> <p>Sidlesham Community Association (SCA) See Box 3rd column</p> <p>Sidlesham County Primary School Head Teacher Mrs S. Koiston – 01243 641238</p> <p>Sidlesham Walk and Lunch Klub (SWALK) Bill Martin 01243 641154 billm89@hotmail.com</p> <p>Sidlesham Womens' Institute Hon. Sec. Ann Holloway 01243 641299 annholloway@42aol.com</p> <p>STAG Sidlesham Traffic Action Group Vacancy for a contact person</p> <p>St Mary's Parish Church Fr. Chris Brading 01243 641775 father.brading@gmail.com www.stmary-sidlesham.org.uk</p> <p>The Cat and Rabbit Rescue Centre 01243 967111 info@crcc.co.uk www.crcc.co.uk</p>	2nd Tues	Quiz with George Torrance as quizmaster.	The Anchor	7.30 pm
	Thurs.	Tea and cake at Mary's Place. For details Contact Carolyn on 07983 701015 or carolyn@brading.net	Church rooms	From 2.00 -4.00 pm
	Thurs.	Short mat bowls Contact Marilyn Sharp 641 437	School Sports Hall	4.30 - 6.30 pm
	2nd Wed	Women's Institute 641 299 (Ann Holloway)	Church rooms	2.15pm
	Sat Term time	Lizzie's Craft Club. Term time Saturdays for children aged 4—11 years. £5 session per child. Contact lizzie@lizziebaily.com	Applefield	2.30 - 4.00 pm

ADVERTS TO BE FOUND ON PAGES 10 - 12
PLEASE USE THEM, THEY ENABLE THIS MAGAZINE TO BE FREE TO YOU ALL

**SIDLESHAM COMMUNITY ASSOCIATION
THE TRUSTEES**

CHAIR: RIACH RYDER
07798774729
riach.ryder@gmail.com

TREASURER: NORMAN ROBSON
SECRETARY: CORINA HALL

LEWIS RAMM
PAUL DEVONSHIRE
WENDY DEVONSHIRE
BILL MARTIN

www.sidleshammemorialhall.co.uk

YOUR PARISH COUNCILLORS

MARTIN MELLODEY - CHAIR
01243 649075
martinmellodey@hotmail.co.uk
NICK WADE - VICE CHAIR

CORINA HALL MARY MONNINGTON
ADRIAN HARLAND TRACEY PARSONS
LEWIS RAMM TRICIA TULL
DAVID GUEST

**SELSEY MOBILE REFUSE SITE
EAST BEACH CAR PARK -**

OPEN BETWEEN 8.15 and 3.00
on ALTERNATE THURSDAYS:

12TH, 26TH SEPT. 10TH OCTOBER

THESE SITES ACCEPT
GREEN GARDEN WASTE, WOOD, METAL ITEMS SUCH AS POTS AND PANS, CARDBOARD, PAPER AND SHREDDED PAPER, SMALL ELECTRICAL ITEMS SUCH AS IRONS, TOASTERS, AND HAIR DRYERS.
NON HAZARDOUS WASTE.
NO TVs OR WHITE GOODS CAN BE ACCEPTED.

**WITTERINGS MOBILE REFUSE SITE -
MARINE DRIVE CAR PARK—**

**PARISH COUNCIL MEETINGS
2nd WEDNESDAYS**

No meeting August and December
Annual Parish Meeting
4th Wednesday in May
in the Church Hall at 7 pm

Planning included in above meetings. Details of Planning to be discussed can be obtained from Alison Colban, parish clerk, details on this page.

For information about the Parish, the Parish Council, agenda's minutes, notices of events, information from CDC and WSCC, SCA, Neighbourhood plan etc

www.sidlesham.org

Chichester Farmers' Market Location: Town Centre
Time: 9.00 - 14.00 1st and 3rd Friday of each month

DATES FOR YOUR DIARIES

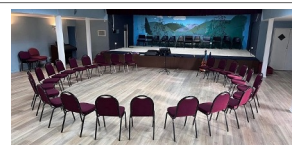


THE ANCHOR IS OPEN EVERY DAY

TELEPHONE 641 373 FOR DETAILS OR TO MAKE A BOOKING

SIDLESHAM MEMORIAL HALL SHOTFORD PO207RD

www.sidleshammemorialhall.co.uk



WHAT'S ON	AT THE SIDLESHAM MEMORIAL HALL - SHOTFORD	
Monday	The Open Door Choir belindagannon.musicforall@gmail.com	7 - 9 pm
Tuesdays	Pilates with Jackie Warton Contact: precispilates@gmail.com	9.30 am - 10.30
Tuesdays	Lunch Club once a month see each month for week or contact Wendy Devonshire 641 457 restart in Autumn	12.30 For 1.00 pm
Fridays 2nd Friday	Music Night Bar open	7 - 10.30 pm
Last Saturday	 in front of Sidlesham Memorial Hall on the left side www.medlams.co.uk	8.00 viewing 10.00 auction until 1 pm
3rd Sunday	Classic Cars in car park	9 am until Noon

TALKS AT 6 - THURSDAYS -
BETWEEN 6 AND 7PM
BASSIL SHIPPAM CENTRE
TOZER WAY, PO19 7LG

Book on line:
bookings@talksatsix.co.uk
Retiring collection for Speaker's choice of charity
Organised by Marilyn Humphrey

We do hope you can come to all or any of the following at :

Dear Supporters

With some sadness we have decided to stop organising Talks at Six at the end of this year. We have had such fun finding speakers and hearing some great talks on a wide variety of subjects and have met some wonderful people and your support has been terrific. But there is always a time to move on, technically I find it tricky, and Freddie has other commitments. So, it is best to stop while still ahead. We will have had 178 talks

since 2016 supporting over 100 different charities, attended by nearly 10,000 supporters, and hopefully will have raised by the end of the year over £40,000 for those charities.

This is our Autumn programme, I hope it will interest you.

Thursday 5th September – Ukraine, Gaza and Iran: Challenges for Western Democracy by Con Coughlin.

Executive Defence and Foreign Affairs Editor at Telegraph Media Group, Con will discuss the many problems in the Middle East and Europe, and the challenges we face in the coming years. He is an expert in this area and will be able to shed light on many of the disturbing situations. Some of his books will be available. Charity: Alban Head Charity

Thursday 26th September – Behind the Privet Hedge: Suburban Gardens

and the Beautification of Britain by Michael Gilson.

There was an explosion of suburban gardens in the early 20th century. Post war their stereotypes were symbols of dull, middle-class conformity, but were about social change. Richard Sudell and others spent a lifetime evangelizing that gardens were the vanguard of progress towards a new equal society with everyday beauty at its centre.

Charity: Save the Children

Thursday 3rd October – Love your Lung by Professor Sir Malcolm Green.

The lung is one of the body's two vital pumps, without which life ceases within about 10 minutes. It is a miracle of design and function, Malcom will examine some of the ways the lung goes wrong, and treatment of choking and other emergencies. Charity: Asthma + Lung UK supports research into lung

WATCH OUT!

Message from Arun District Council copied from Facebook: With increased challenging behaviour in the area at the moment, we would like to remind you to report all incidents to Sussex Police by calling 101, or if it is an emergency call 999. We have had reports of members of the traveller community door knocking and asking for trade. Please ensure that when employing tradespeople, you check their credentials and look for reviews of their past work. Check in with more vulnerable members of your family, friends or neighbours, or those that may not be connected digitally, to share this message. Rest assured that council

Talk – The History of Fire

Holly Beeston has a 16-year career in the fire service, some in West but currently in East Sussex based in Brighton. Once known as the ‘fire brigade’ it is now called the ‘fire and rescue service’. She gave us an interesting talk, first on the history of fire services in this country and then on her own personal experiences. Before the Second World War, there was no public fire service, such provision coming courtesy of insurance companies. These would only attend those fires at properties that were insured with them. (There might be an antique one in Chichester.) With the Blitz in many cities in this country, there was a great demand on firefighting resources, particularly with the use of incendiary rather than high explosive bombs. With the passage of time, fire engines have become bigger and more sophisticated in terms of the equipment they carry. Also, the clothing worn by fire personnel has improved but become heavier (currently 45 pounds). We are a long way away from those images of the Keystone Cops. Most fires are still fought with water which demands a supply of water in sufficient quantity and pressure. Much of the duties of fire brigades these days is in respect of fire prevention – better not to have a fire in the first place. They therefore inspect properties and give advice on how to

reduce the risk of a fire. Fires, however, are not the only emergency. Fire engines have the equipment to cut people from crashed cars or collapsed buildings. They also have the pumps to deal with flooding. And, yes, they still rescue cats from trees, though the cat must have been up there for three days. Holly attended the 2023 Royal Albion Hotel fire in Brighton. This involved 25 appliances, some coming from London. It caused great disruption and financial cost spread over many balance sheets and many days, not to mention the disruption to lives and businesses, though no fatalities. The investigators attributed the fire to a cigarette, the high winds on the day and very dry timbers in the building making for an evil mix. Holly admitted to having a personal sense of excitement in such situations, added to the feeling of satisfaction at having completed a successful job, a winning combination. Because such situations are not constant, it is easy to see how those wishing to cut costs can feel justified in axing such services. It is always interesting to hear accounts from people who have been actively involved in real life



SIDLESHAM COMMUNITY ASSOCIATION

ANNUAL GENERAL MEETING

TO BE HELD ON WEDNESDAY 16TH
OCTOBER 2024 AT 7.00 p.m.

Bar available



IN THE MEMORIAL RECREATION
HALL

This is an opportunity to ask questions and give the SCA your ideas regarding the future of the village and its facilities. You will also have the opportunity to see the progress we have made in the building

AGENDA

1. Welcome
2. Apologies
3. Minutes of AGM held Thursday 24th Nov 2023
4. Matters arising not on the agenda.
5. Chirman’s report.
6. Secretary’s report.
7. Treasurer’s report.

NEW course to start in Sept to help seniors and their families to get direction, order and peace of mind about their future.

Gayle Palmer will be leading a shortened, beta version of her **Great Guidelines for Later Life** course and we shall be working on 3 areas of our lives over the space of about 3 to 4 months:

Health, Wellbeing and Vitality
Medicals
Money and Finance

It is designed to help all age groups to get their “stuff” organised and managed – you don’t have to be a senior to struggle with that - and in bitesized pieces.

There are limited spaces and it is by application.

Send an email to gaylepalmer@btinternet.com to arrange a phone call to explain more or leave a message on 07769 746113.

Please leave a phone number as well as your email. Thank you.

Gayle Palmer at Living Elements Clinic

www.greatguidelinesforlaterlife.com

Gayle Palmer D.O.

Registered Osteopath - Your health is my priority.

Living Elements Clinic, Keynor Lane Sidlesham,

CHICHESTER, West Sussex PO20 7NL

www.livingelements.co.uk Facebook

HOUSES WITH A STORY TO TELL

After a reference in the Domesday Book it's back to the LSA houses

No 20 /21 on Selsey Road, backing onto Chalk Lane

No20:

Alfred Potts' children were admitted to Sidlesham School in December 1936, having previously attended St Bedes (RC) Junior School in Jarrow. The family 'returned north' in June 1938 (Schools Admissions Register)

Frederick & Mary Browning were on the 1939 Census. Their daughter was admitted to the school in January 1940. The family 'left the district' in September 1940.

(School Admissions Register)

John and Joy Watts came (after the war?) from Radnorshire where John had managed a mushroom farm. He ran the First Sidlesham Scout Troop. (extract from 'Southern Weekly News' 13/9/1952). Site of a former Roman villa was discovered on this smallholding in 1951. George Harris was the tenant at the time of the excavation of the Roman villa in 1951-54 (see 'More' below). Son Charles on the Tenants Register in 1976, but no departure date.

No 21:

Henry & Rose Southern were here in December 1938 when

their children were admitted to Sidlesham School, having previously attended school in Barton, North Shields. Henry's occupation on the 1939 Census was listed as 'Trainee'. Ernie and Ivy Bockley arrived in 1950/51. Ernie retired to Chichester in September 1976 (LSA Bulletin 1449).

Ivy Bockley was a friend of my mother, Vera Brine, from when they both lived in Storrington during the war. After our move to the LSA proved to be going well they decided to follow us. Ernie had been the head gardener at a large country house in Storrington. He kept a goat for milking. They had two daughters Anne and Susan. (John Brine No 139) The site of No 20 is a former LSA smallholding and "the excavation is identified by a nettle-patch, which the siting symbol correctly marks. Mr Harris, the tenant, has dug up some tile and pieces of pot (grey ware) and come across wall-footings, slightly further to the west. One or two pieces of roofing and flue tile which are lying about appear to be wasters, and as there are suitable clay deposits in the area (there was once a brick works in the area TQ 859960 (a) the villa may have been connected with the tile industry".

(Source Historic England: www.pastscape.org.uk)

Allan Campbell (grandson of William, the original tenant at No 27) took over the tenancy in October 1976 (LSA Bulletin 1452) and became a Sidlesham Grower in 1991

RAISIN: A grape with a sunburn.

SECRET: Something you tell to one person at a time.

TOOTHACHE: The pain that drives you to extraction.

TOMORROW: One of the greatest labour saving devices of

today.

YAWN: An honest opinion openly expressed.

WRINKLES: Something other people have; similar to my



A GANDER AT THE GOOSE

September is a time of change and new beginnings for many of us, and it is no different in the bird world. Spring visitors have left or will soon be leaving and our winter visitors will start arriving over the next few months. It is the autumn migration that makes Pagham Harbour such a lively winter reserve teeming with life.

You may not find geese the most exciting birds in the reserve, neither are they as elegant or aesthetically pleasing as others. But, when you hear that familiar 'honking' sound high in the sky, or see the huge flocks congregate on the mud banks of Pagham Harbour, you can see there is plenty to appreciate about them.

There are eight native geese in the UK. The 'black' geese: Barnacle, Brent and Canada; and the 'grey' geese: the Pink-footed, Greylag, Tundra Bean, Taiga Bean and White-fronted geese. The Egyptian Goose is also an all-year round resident of the UK but, as the name would suggest, it is not native having been introduced from the Nile Valley and south Sahara.

Some of our geese (Canada, Barnacle and Greylag) will be found all year round in some parts of the UK, but numbers will



increase dramatically in the winter when they are joined by migrating populations from the Arctic, Iceland, Greenland and Scandinavia. Other geese species will just spend the winter here to make the most of our warmer winter climate.

One intriguing behaviour of some geese is the V-formation or 'skein' they make when flying. This helps them preserve energy as each bird in the V creates a reduction in wind resistance for the one behind, allowing it to conserve energy. At intervals, the bird in the lead will drop back and another bird will take the helm – what a fabulous piece of teamwork. It is also believed that the V-formation plays an important role in the ways the birds communicate with each other, allowing them to keep track of each bird in the group, a formation that has been adopted by fighter pilots for the same reasons.

Other geese species such as the Brent, Barnacle and Pink-footed tend to fly in very large flocks, a behaviour that is associated with migration. Being in a large group saves energy and allows for the shared knowledge needed for long migrations. This autumn you may see one of these huge flocks passing over – a joy of geese and the season's migration.

To learn more about the Autumn Migration and to see some of our migrating waders, songbirds and seabirds, why not come along to our Migration Magic walk around Pagham Harbour. Saturday 14 September, 10am (duration 3½ hours). £8 per person / £5 members

FLOWER FANCIES



We're now well into planting season, the greenhouses being about as empty they've been since the old days when salads were grown. The key with Autumnal planting in general is to get the plants in on time to get established before the Winter, but not so early they get confused and move to their flowering stage. To misuse Issac Newton's quote 'Every action has a reaction', and last year's steriliser breakdown meant I spent a lot of time in the Winter and Spring hand weeding, which in turn meant no time for Spring planted crops, which resulted in little flower picking in the Summer, which has given me more time to get ready for Autumn planting. I have ambitious plans for next year's cropping! That didn't stop me having Sunday off to take Elly to her first Competition after a year of recovery and rehabilitation. Hoopers is like agility but with hoops instead of jumps. Lots of fun in a friendly atmosphere at Jumping Jacks, and at the end of the day a few rosettes and a trophy.

Mentally I put the flowers in three categories. There's the perennials that can be planted and flower any time of the year, like Alstroemeria, pinks and anemone. Then there's those that will flower at a fixed time irrespective of when you plant them, including Sweet William, Ranunculus, Daffodils, Freesia, Stock, Chrysanthus and Iris. Lastly there's those which have a fixed time from planting to flowering, but have a broad range of possible planting dates, including Snap Dragons, Gladioli, Asters and Canterbury Bells. There're other factors effecting when I plant what, but these define the limits to the planting seasons.

To be planted this Autumn are Sweet William, Butterfly and standard Ranunculus, Freesia, Anemone, Stative, Daffodils, Iris, Canterbury Bells, Garden pinks and Alstroemeria. There's a few others I'd normally plant now, but will delay sowing till January because the seasons are changing and another dark Winter seems highly likely. At the time of writing the Sweet William and stative are sown, and will be ready to plant out in a few weeks. Freesia and Daffodils are still dormant and I have to finish digging up the old bulbs ready to plant them in a new area for next season. The second half of the anemone are chelating (no, not the bulb equivalent of chillaxing!), which is mixing them with wet vermiculite and putting in the cold store to pregerminate before planting. Half the ranunculus claws I have already, the other half and the iris will be along soon. In brief, compared to this year I plan to have more Ranunculus, Freesia, Anemone and Iris, with about the same amount of Sweet William.

NEW DEMENTIA SENSORY GARDEN OPENED BY TANGMERE CHARITY

Sage House in Tangmere has created a brand-new sensory garden to give people living with dementia the opportunity to benefit from being outdoors, participating in gardening, and sensory stimulation. Sage House is a unique dementia hub - the first of its kind in the UK, providing a full range of dementia services under one roof.

Taking pride of place at the front of the hub, the charity has transformed an unused area - full of scruffy shrubs affected by blight, into an accessible and colourful sensory garden. The endeavour was led by Sage House Services Manager, Simon James, Wayfinder Natasha Davies and a volunteer garden committee. The garden has been designed as an accessible space for everyone to appreciate and enjoy. The paths have been created to be wheelchair accessible, enabling access to every area, and the raised beds enable people to garden without bending down.

The garden will be maintained by attendees at the charity's Day Breaks and activity sessions - helping to keep them active. Carers can also benefit from the garden as a quiet and safe space for reflection outdoors, as well as somewhere to remember loved ones who they have lost to dementia.

The new sensory garden was unveiled in an event held on Thursday 8th August, and declared open by the Chichester Town Crier and former Mayor of Chichester, Richard Plowman. Thirty people attended the event and enjoyed a tour of the garden's many donated plants. Guests included parish, district and county councillors, businesses that donated services or products for the garden, volunteers who have supported the effort, and charity Trustees and Vice-Presidents.

The honour of the ribbon-cutting was granted to Sage House customer Jim, who lives with dementia and has a passion for gardening. Jim is one of the first customers to feel the huge wellbeing benefits that the therapeutic sensory garden with undoubtedly bring to local people living with dementia.

The project was funded by the Worshipful Company of Gardeners and Chichester District Council, with materials and/or services kindly provided by Knights Fencing, SCS Waste, Brick Kiln, Geoff's Garden Ornaments and the Woodhorn Group. This beautiful new garden wouldn't have been possible without the all the volunteers and donors who have generously supported the project and helped bring it to life.

Emma Radley, Chief Operations Officer said: "This garden will provide an exciting new opportunity for us to engage our customers in meaningful activities. We recognise the many benefits that gardening brings and want to support our customers to enjoy gardening in a safe way. Alongside our full range of services, this is another way for us to provide excellent care for people with dementia and for them to connect with the natural world."



Sidlesham's Harvest Flower Event

View the beautiful displays
at St Mary's Church

All welcome
Drinks &
canapés



Featuring
singer
Aimee Iris

Sat 5 Oct

6pm start

Book your free ticket: trybooking.com/uk/DUFL



NATIONAL EYE HEALTH WEEK HIGHLIGHTS IMPORTANCE OF REGULAR EYE HEALTH CHECKS

From 23rd – 29th September 2024 it's National Eye Health Week, and 4Sight Vision Support (4SVS) is proud to support this initiative which encourages people to look after their eyes and have regular eye health checks. This year, the theme is 'Vision Really Matters', and 4SVS will be raising awareness and providing information about accessing eye health checks and promoting good eye health in our daily lives. Regular eye health checks can detect early signs of conditions, including glaucoma, which can be treated if found soon enough. In addition, during an eye health check, other health conditions such as diabetes or high blood pressure may be detected. Those living with sight loss should continue to do so as checking for further changes in the eyes can help make the

Anyone is welcome to contact the charity if they would like to learn more about what to look out for/signs, practical support and advice, or help with accessing a local optician. For further information contact 4Sight Vision Support on 01243 838001, email fundraising@4Sight.org.uk or visit www.4sight.org.uk
The image shows 4SVS's Julie having an eye health check with Tom from Walsh Opticians, Bognor Regis.



New Theatre Productions
Presents in association with
SCATS

We shall be joyful of your company

Habeas Corpus

A comedy
by Alan Bennett

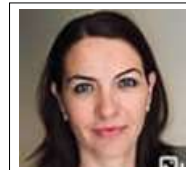
7.30 p.m.

Sidlesham Memorial Hall
Friday October 25th
& Saturday October 26th

Tickets £10

available from 07714 205377 or
d-blackford@hotmail.co.uk

EVENING TALK TOPIC: UROGYNAECOLOGY



Miss Georgina Fraser
Consultant Obstetrician and Gynaecologist with advanced certification in Urogynaecology
Consultant Urogynaecology lead at St Richard's Hospital

Hosted by Selsey Patient Group and Selsey Medical Practice, together with Nuffield Health.

Join us at The Selsey Centre, Manor Road, Selsey, PO20 0SE for this FREE event.

at 7.00 pm on Tuesday 17th September 2024

Miss Fraser specialises in Urogynaecology at both the Nuffield and St. Richard's Hospital. There will be an opportunity to learn more about urogynaecological conditions and to ask questions after the presentation.

Refreshments will be available.

Ample on site parking.

Please let us know if you will be attending by ringing 01243 606328 or emailing barbandvic@sky.com

JUST BECAUSE
YOU ARE OFFENDED
DOESN'T MEAN
YOU ARE RIGHT

IRONY.
THE OPPOSITE
OF
WRINKLY

PUNS ABOUT
COMMUNISM AREN'T
FUNNY UNLESS
EVERYONE
GETS THEM



INSIDE THE WILDLIFE HOSPITAL IN SEPTEMBER

This time of year is typically when we receive our most varied species of wildlife of all shapes and sizes. Luckily, our dedicated team of well-trained staff and volunteers and our ever-developing site are well-equipped to help any and all that come through our doors. None of this would be possible without our incredibly generous supporters – thank you for helping to keep our vital work going!

We are now running Online Talks covering ‘behind the scenes’ at Brent Lodge and fascinating facts about our beautiful British wildlife. For more details, please see our website and social media pages for links to booking tickets.

PATIENT STORY

These stunning wild rabbits came into us a few weeks ago as tiny ‘kits’ found without their parents. After their situation had been monitored for a while and no parents were returning, they were brought into our care as they were too little to care for themselves. Initially, they needed hand-formula through pipettes every couple of hours. Now, at several weeks old, they are fully weaned and have moved onto a solid diet. We have now relocated them to one of our outside enclosures to continue their rehabilitation and development, where they will spend another few weeks before being assessed for release.



HELPING BRENT LODGE WILDLIFE HOSPITAL

We are always in great need of newspapers (non-shiny) for patient bedding, which can be dropped off at our main hospital in Sidlesham or at one of our charity shops. If you are able, we would be very grateful if you could please remove any staples yourselves. If you have any time to also hand-shred some into strips for us, this would be so warmly appreciated and can mean it goes straight into bedding use upon arrival!

If you would like to find out more about booking a school visit, event stall or educational talk/workshop (for children or adults), please get in touch and we’d be delighted to come and visit you soon!

By Alex Foster, Education Outreach Coordinator

Web: www.brentlodge.org Tel: 01243 641672 Email: enquiries@brentlodge.org

Address: Brent Lodge Wildlife Hospital, Cow Lane, Sidlesham, PO20 7LN.

HELPING BRENT LODGE WILDLIFE HOSPITAL

We are always in great need of wet and dry cat/dog food, hedgehog kibble, puppy pads and items from our Wish List (please see our website www.brentlodge.org for details) to help the animals in our care. We are already preparing for a very busy autumn/winter ahead, particularly with juvenile hedgehogs, so any help at all is warmly appreciated!

If you would like to find out more about booking an event stall or educational talk/workshop (for children or adults), please get in touch and we’d be delighted to come and visit you soon!



CHICHESTER AND DISTRICT GARDENS AND ALLOTMENTS ASSOCIATION

We really enjoyed our visit to Nymans on a beautiful sunny day and by the time this magazine is printed we will have visited Eastbourne, either to watch the Airshow or to go shopping. Our annual Summer Show reverted back to August this year: because of climate change, we tried holding the Show in July last year, but this proved to be an unpopular decision. The Show is open to

anyone to enter any category.

September sees our Club holiday to Blackpool, where we will see the lights, visit RHS Bridgewater and have a trip on the Lune Aqueduct. The next Club newsletter will be sent to members listing outings up until December and also the next Club holiday

Our next evening meeting is on Thursday 19th September - the speakers are Lizzie and Tony Gilks talking about The Way We Were. This sounds intriguing!

The next outing is a trip on the River Thames at Windsor on Sunday 15th September. For further details of any Club

TAILS ARTICLE SEPTEMBER 2024

Hello, it’s me Tails, the out-and-abouter reporter for The Cat and Rabbit Rescue Centre.

We had such an amazing day at our Summer Fayre last month, thank you to everyone who came to visit us. I am so pleased to be able to share that we raised over £16,500!! We are all so grateful to everyone who helped to make the Summer Fayre possible and especially to the amazing volunteers who gave up their time to help on the day. This money will make such a difference and will allow us to continue helping the animals that need us now and in the future.

The week after the Summer Fayre was particularly tough for my staff and after the high of the Summer Fayre it just brings into perspective the reality of rescue. In that one week we took in three orphaned kittens who were unfortunately suffering with a bacterial infection. Sadly, two of the kittens passed away and my staff are now hand feeding the last one, I have all



my paws crossed that she makes it. We also took in a stray cat who we had been trying to trap for a while, but he sadly had too much wrong with him and could not be saved. In the same week we lost one of our foster cats, and two separate feral cats that we had offered to provide vet treatment to after local vets could not treat them due to them being feral. Although really sad at least I can say that my staff tried their best for these cats and they are no longer suffering. Later in that same week we helped eleven kittens and two adult cats that had been living in a garden. Thankfully, they all seem healthy and will now get the best start in life.

Rescue really is so tough sometimes, but we will keep going and will always do the best for the animals that need our help. See you next time.

Love
Tails x

P.S. Please keep an eye on our website www.crrc.co.uk and our Facebook page for all the latest news and info regarding

Woof for Wilf

Enjoy a dog walk to make a difference this November 3rd! St Wilfrid's Hospice is inviting the local community to bring their pawed pal on a fundraising dog walk at Great Ballard School. We will be heading off at 11am on November 3rd, to walk the beautiful school grounds in the morning breeze. After a lovely stroll, you'll be able to enjoy food and drink with other dog-lovers at our event village, as well as some dog-related stalls to browse.



If you can't join us that day, or would like to go even further we are also challenging people to walk 31 miles throughout October.

Get your ticket now:
www.stwh.co.uk/woof-for-wilf

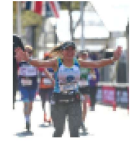
The Great South Run

Ever wanted to explore Portsmouth without the traffic?

St Wilfrid's Hospice are looking for runners to take on the Great South Run this October 20th. This amazing challenge

takes runners on a 10-mile route around Portsmouth, past some of its historic landmarks and breathtaking views without needing to worry about checking both ways when crossing the road.

By taking on this run for St Wilfrid's and fundraising, you will be helping fund the expert end-of-life care services they provide people all around your local community.




Sign-up to take part now:
www.stwh.co.uk/greatsouthrun

Secondhand Shopping


Refill your wardrobe while helping your local community.

St Wilfrid's Hospice has 12 charity shops around the local area, offering affordable, pre-loved clothes. Purchasing secondhand helps to keep clothes out of landfill, reducing the damage to our environment. Plus, by purchasing with St Wilfrid's, your money will go directly to supporting the care of patients and their loved ones on the Hospice Ward, and out in the community.

Find your nearest shop here:
www.stwh.co.uk/shops

The fruit trees in the Community Orchard at the Sidlesham Memorial recreation ground are now in fruit. Next to the playground. Do help yourselves, they need to be harvested. Enjoy.



**HELP YOUR SURGERY
JOIN THE FRIENDS**


The Friends of Selsey Medical Centre help fund necessary equipment and services not provided by the NHS.

Recently we have contributed in whole or partially to the following:

**DEMENTIA TRAINING FOR SURGERY STAFF
PERSONAL ADVICE AT CARE SHOP AND SURGERY
BUDDY TRANSPORT SCHEME (low cost taxi for those who need help from home to surgery and local hospitals)**

**RECENT SURGERY
BUILDING IMPROVEMENTS**

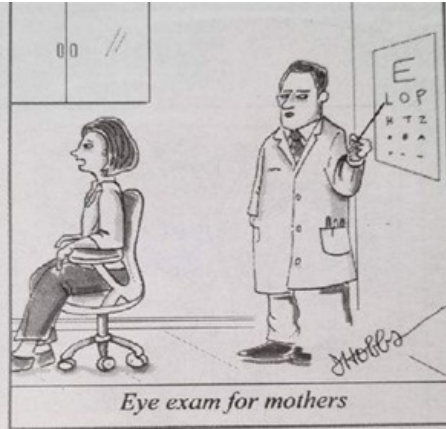
If you use the surgery, please become a Friend with an annual donation. Membership costs from £5per person.



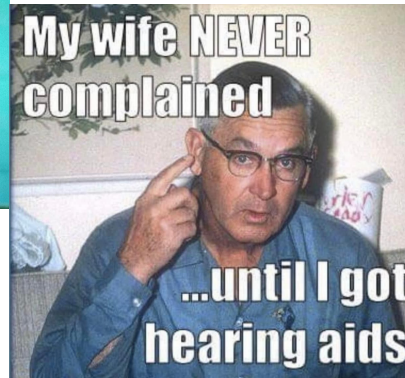
Signup forms available at the Medical Centre or phone our Membership Secretary on 01243 606328.

The FRIENDS OF SELSEY MEDICAL CENTRE

Registered Charity No 1013456



I'M FRIENDS WITH 25 LETTERS OF THE ALPHABET I DON'T KNOW Y



FOR CHEMISTS ALCOHOL IS NOT A PROBLEM IT'S A SOLUTION

What type of sandals do frogs wear?

Open toad

NEW OPENING TIMES FOR THE CHICHESTER SORTING OFFICE

Monday to Friday open 8 am to 10 am
 Thursday open 8 am to 10 am then again 4 pm to 6 pm
 Saturday open 8 am to 12 noon
 Sunday - closed



LLOYDS MOBILE BANK SERVICES ON MANHOOD PENINSULAR



SELSEY Thursday am 9.45 – 12.00

Fire & Rescue,
 76 High St, Selsey,
 PO20 0QJ

E. Wittering Thursday pm 1.30 - 15.00
 West Sussex
 Fire & Rescue
 Oakfield Approach,
 E. Wittering

From Monday 12 February 2024, you will need to book to visit all Recycling Centres in West Sussex.

Slots can be booked up to 14 days in advance, including the same day where available.

westsussex.gov.uk/BookToRecycle
 01243 642106

ROOMS FOR HIRE AT CHRIST CHURCH CHICHESTER



A variety of small rooms and larger halls available.
 Wifi in all rooms.

www.christchurchchichester.org.uk

Contact: churchbookings@gmail.com



CARE HOME



RESPITE CARE



SUSSEX GRANGE
 Care with Kindness
 Your Care, Your Choice

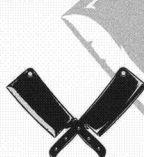
01243 60 62 62
contact@sussexgrange.co.uk
www.sussexgrange.co.uk

DAY CARE



HOME CARE





C.R. WARD
FAMILY BUTCHER
WWW.CRWARDBUTCHERS.CO.UK

CHRIS WARD - PROPRIETOR
01243 786 843

3 STOCKBRIDGE PLACE | STOCKBRIDGE | CHICHESTER | WEST SUSSEX | PO19 8QH




THE ANCHOR INN
Street End Road
Sidlesham PO20 7QU
Telephone 01243 641373

AWARD WINNING LOCAL ICE CREAM



Hand made in Sidlesham
www.carolinesdairy.co.uk

CHICHESTER CATHEDRAL
Discover over 900 years of history.
Entry free, donations welcome.
chichestercathedral.org.uk
#ChichesterCathedral

Berries On Tap
Keymer Brook Farm
Locally grown, seasonal fruit via chilled vending on Lockgate Road, Sidlesham.
Follow us for availability updates
f @BerriesOnTap

Choose your fruit, tap your card, take it home.

Outstanding home care with a difference. Please call 01243 884111

Care designed for you...

- Companionship, home help and personal care
- Dementia, specialist & live-in care services



Home Instead
For us it's personal



MJ CLEANING SERVICES
Trading locally since May 2008



MARTINE JAMES

Mobile Contact of 07974 550530

Email Contact of Martine.mjcleaningservices@gmail.com



TROJAN TIMBER PRODUCTS
WWW.TROJANTIMBERPRODUCTS.CO.UK

Healthy Feet
MCFHP MAFHP, HH Dip (N.S.F.C.), HH Dip (Reflex.)
Julie C Dorricott
PROFESSIONAL FOOT HEALTH PRACTITIONER & REFLEXOLOGIST
All in the comfort of your own home
Tel:- 07933161025

Fungal Infections	Ingrown nails	Verrucas
Corns/Callus	Cracked heels	Diabetes
Relaxation/Stress	General Maintenance	Thickened nails

Registered Member of the British Association of Foot Health Professionals

Sussex Heat Care Ltd
Heating, Plumbing
& Bathroom Design & Installation
01243 841464
sussexheatcare@btpopenworld.com






TROJAN TIMBER PRODUCTS LTD
SUPERIOR QUALITY TIMBER BUILDINGS



- PLAY HOUSES
- STORAGE CHESTS
- GARDEN TIDY'S
- SUMMER HOUSES
- LOG STORES
- GARDEN BUILDINGS
- KENNELS AND OTHER PET HOUSING

BAKERS FARM, SELSEY ROAD, SIDLESHAM, CHICHESTER, WEST SUSSEX, PO20 7NE
INFO@TROJANTIMBERPRODUCTS.CO.UK
01243 641683



Bluefish
COMPUTER SERVICES

:: t: 01243 216313 ::
m: 07858 035659 ::
e: support@bluefishcs.co.uk ::

AMANDA MOBILE HAIRDRESSER

Fully Qualified

Cutting, Blow Drying, Setting, Colours, Highlights, Perms.



07778 505934



The Holistic Hut
Reflexology | Reiki | Massage

Welcoming garden based hut with off road parking

- Reflexology
- Facial Reflexology
- Zone Face Lift
- Reiki
- Beauty treatments
- Swedish Massage
- Aromatherapy Massage
- Hot Stone Massage
- Himalayan Salt stone Massage

Letty Smith HDipCT (VTCT)MAR
Tel- 07796035194
www.theholistichut.uk

Registered with the Association of Reflexologists

Cards delivered to your door
ANDA CARDS
By Alexandra Baily
Order online or by phone
www.andacards.com
info@andacards.com 01243 641470
Applefield 23 Chalk Lane, Sidlesham
Winter and Local scenes.
Blank inside. Good for presents.
Suitable for any occasion round the year!

KATCHADAN SELF STORAGE

Katchadan Nursery • Keynor lane Sidlesham • Chichester • West Sussex • PO207NL
8 +10 +20 ft & 40 ft. shipping containers

CLEAN HARDSTANDING SURFACE • TOILET • ELECTRICITY
WASHDOWN HOSE AREA • GOOD EASY ACCESS • LONG OR SHORT TERM

www.katchadanselfstorage.co.uk
Robbie: 07771 572890 Danielle: 07507945399
katchadan@gmail.com

Does your dog need a walker or sitter? Boarding or grooming?

I can provide a friendly & reliable walking & pet sitting service in & out of the Selsey area.

Find me on The Good Dog Guide
Look up my business page on Facebook
Discount for more than one dog
Fully Insured CRB checked
Call Lisa 07496088973
£12 per 45 mins - one hour
Hattiesbns@yahoo.co.uk





SUPPLIERS OF MOWERS DOMESTIC & COMMERCIAL
GARDEN EQUIPMENT & COMPACT TRACTORS
SALE, SERVICE / REPAIRS & PARTS
Tel: 01243 531298



DOVETAIL TRAILERS

Contact:

01243 641 658

Dovetail.trailers@btinternet.com



GRT Electrical

All electrical work undertaken
call Garry for a free quote on
mob: 07826 850619
office: 01243 821135

NO JOB TOO SMALL

Electrical condition reports
Fuse board upgrades
Testing & Certification
Fault finding
PAT testing

Electrical Safety Register
ELECTSA
Checkatrade.com
Where reputation matters



Meadowgate Construction Ltd

Groundwork
and hard landscaping specialist

www.meadowgateconstruction.co.uk
meadowgateconstruction@gmail.com
Mobile 07824994391



Personal Trainer

www.jolly.fit

mattjollyfit@gmail.com

07834 773589

jolly.fit



ROB ALLISON OVEN CLEANING

- Ovens
- Filters
- Hobs
- Grills
- BBQs
- Ranges
- Extractors
- Microwaves
- AGAs

TEL: 01243 607152
MOB: 07557 110943
info@raovencleaning.co.uk
www.raovencleaning.co

Safe, gentle,
environmentally
friendly cleaning.



Agents for Hayter, Mountfield, Stiga, westwood/
countax, Lawnflight, Echo Parts and service on
all machines
GARDEN EQUIPMENT, GENERATORS ETC
SALE, SERVICE/REPAIRS & PARTS
Tel: 01243 773898



SMR SOLICITORS

Well-established firm with offices in
Chichester, Selsey, & East Wittering.
Providing Conveyancing, Wills, Probate,
Powers of attorney, Commercial and
Employment advice and a full Litigation
service, inc. family, divorce, and
contractual disputes.
Please contact us for further information
Telephone : Chichester - 01243 780211
Selsey - 01243 602832
Witterings - 01243 671782

Dubbeldam Nurseries

Fresh cut local seasonal
cut flowers.

For opening hours availability check
facebook or the noticeboard by the
stall on Lockgate road.

SIDLESHAM GARAGE LTD

Lockgate Road PO20 7QE

01243 641391

M.O.T. TESTING STATION

SERVICE & REPAIR ALL MAKES
LASER WHEEL ALIGNMENT WITH PRINTOUT
TYRES, BATTERIES AND EXHAUSTS FITTED
FREE COLLECTION AND DELIVERY
COURTESY CARS AVAILABLE BY APPOINTMENT
WWW.SIDLESHAMGARAGE.CO.UK
PROPRIETOR: Graham Porrett

NATIONAL WESTMINSTER BANK

Is now providing Mobile Banking
Services

On Monday Mornings 10.30 to 11.30

Selsey Co-op Car Park

(behind fire station)



SIRSERVICES

Robert Fogden
Plumbing and Gas Engineer



M. 07771 572892 T. 01243 604073
E. rob@sirplumbingservices.co.uk
Www.sirplumbingservices.co.uk

GAS SERVICING LPG GAS SERVICING HEAT PUMPS
BOILER REPAIRS GAS APPLIANCES BATHROOMS
PLUMBING SERVICES BOILER INSTALLATIONS
HOT WATER CYLINDERS UNDER FLOOR HEATING
POWER FLUSHING SHOWER ROOMS

Sidlesham TYRES
01243 641986
enquiries@sidleshamtyres.co.uk
For all your tyre needs. Car, van, 4x4, trailer, mower or wheelbarrow.
Down the end of Jury Lane behind Chichester Canvas.

Meadowgatenursery
ornamental grasses

Street End Lane
Sidlesham
West Sussex PO20 7RG

t 01243 641997
m 07736 523262

meadowgatenursery@tiscali.co.uk
www.meadowgatenursery.co

J W SMITH CHIMNEY & LOG BURNER SWEEP
CHIMNEY SWEEPS (Power Sweep & Vacuum System)
CAMERA SYSTEM USED —BIRD NEST REMOVAL
STOVE MAINTENANCE FULLY INSURED AND CERTIFICATED
CALL NOW 07769211143
www.jwsmithchimneysweep.co.uk

HELEN'S AIRPORT CARS
"With US it can often cost less than rail or airport parking"
Saloons
MPVs
Estates
4 - 8 seaters
Reliable
Affordable &
Comfortable
Pre-booked
24hr
01243 780999
Book Online Now www.airporttaxi.co.uk
Selsey - The Witterings - Bisham - Itchenor - Bosham - Chichester
"WE HAVE A DRIVER NEAR YOU!"

DANIEL RYAN
Tree Services,
Qualified Tree Surgeon
01243641492
mobile: 07912984764